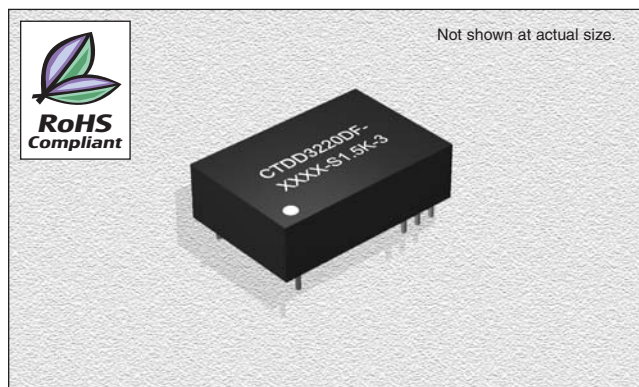


CTDD3220DF-S1.5K-3 Series

Wide Input Isolated & Regulated
3W Output, Single Output



SPECIFICATIONS

Part Number	Vin Nom. (VDC)	Input Range (VDC)	Vin Max.* (VDC)	Vout (VDC)	Iout Max. (mA)	Iout Min. (mA)	Effi. Typ. (%)
CTDD3220DF-0505-S1.5K-3	5	4.5-9	11	5	600	60	68
CTDD3220DF-0509-S1.5K-3	5	4.5-9	11	9	333	34	72
CTDD3220DF-0512-S1.5K-3	5	4.5-9	11	12	250	25	72
CTDD3220DF-0515-S1.5K-3	5	4.5-9	11	15	200	20	73
CTDD3220DF-0524-S1.5K-3	5	4.5-9	11	24	125	12	71
CTDD3220DF-1205-S1.5K-3	12	9-18	22	5	600	60	74
CTDD3220DF-1209-S1.5K-3	12	9-18	22	9	333	34	78
CTDD3220DF-1212-S1.5K-3	12	9-18	22	12	250	25	80
CTDD3220DF-1215-S1.5K-3	12	9-18	22	15	200	20	79
CTDD3220DF-1224-S1.5K-3	12	9-18	22	24	125	12	78
CTDD3220DF-2405-S1.5K-3	24	18-36	40	5	600	60	76
CTDD3220DF-2409-S1.5K-3	24	18-36	40	9	333	34	80
CTDD3220DF-2412-S1.5K-3	24	18-36	40	12	250	25	82
CTDD3220DF-2415-S1.5K-3	24	18-36	40	15	200	20	81
CTDD3220DF-2424-S1.5K-3	24	18-36	40	24	125	12	80
CTDD3220DF-4805-S1.5K-3	48	36-72	80	5	600	60	76
CTDD3220DF-4809-S1.5K-3	48	36-72	80	9	333	34	78
CTDD3220DF-4812-S1.5K-3	48	36-72	80	12	250	25	81
CTDD3220DF-4815-S1.5K-3	48	36-72	80	15	200	20	83
CTDD3220DF-4824-S1.5K-3	48	36-72	80	24	125	12	80

*If Input voltage above specified may cause permanent damage to the device

FEATURES

- Efficiency:** To 83%
- Temperature Range:** -40°C to +85°C
- Isolation:** 1.5KVDC
- Package:** UL94-V0
- Miscellaneous:** Wide (2:1) Input Range. Single Output. No heat sink required. Industry standard pinout.
- Samples available.**

CHARACTERISTICS

- Output Short Circuit Protection:** Continuous, Auto Recovery
- Temperature Rise at Full Load:** 15°C (Typ.)
- Cooling:** Free air convection
- Operating Temperature Range:** -40°C to +85°C
- Storage Temperature Range:** -55°C to +125°C
- Lead Temperature:** 300°C (1.5mm from case for 10 seconds)
- Storage Humidity Range:** ≤ 95%
- Case Material:** Pastic (UL94-V0)
- MTBF:** >1,000,000 hours
- Isolation Voltage:** 1,500VDC
- Isolation Resistance:** >1,000MΩ
- Weight:** 15G
- Miscellaneous:** RoHS Compliant.

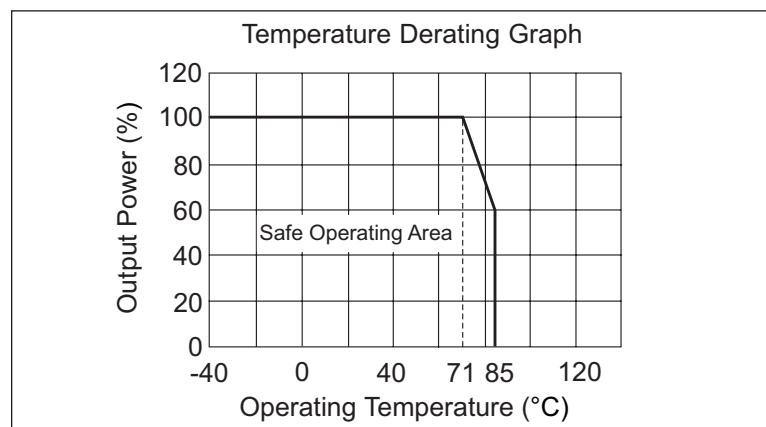
OUTPUT SPECIFICATIONS

Item	Test Condition	MIN	TYP	MAX	Units
3W Output Power		0.3		3	W
Positive Voltage accuracy	Refer to Recommended Circuit		±1	±2	%
Load regulation	From 10% to 100% load		±0.5	±0.75	%
Line regulation	Input Voltage from low to high		±0.2	±0.5	%
Temperature drift (Vout)	Refer to Temp. Derating Graph			0.03	%/°C
Ripple	20Hz to 300KHz Bandwidth			50	mVp-p
Noise	DC-20MHz Bandwidth		100	200	mVp-p
Switching frequency	100% load, nominal input voltage		100-650PFM		KHz
Isolation Capacitance			100		PF

Note:

1. All specifications measured at TA=25°C, humidity<75%, nominal input voltage and rated output unless otherwise specified.

TYPICAL CHARACTERISTICS

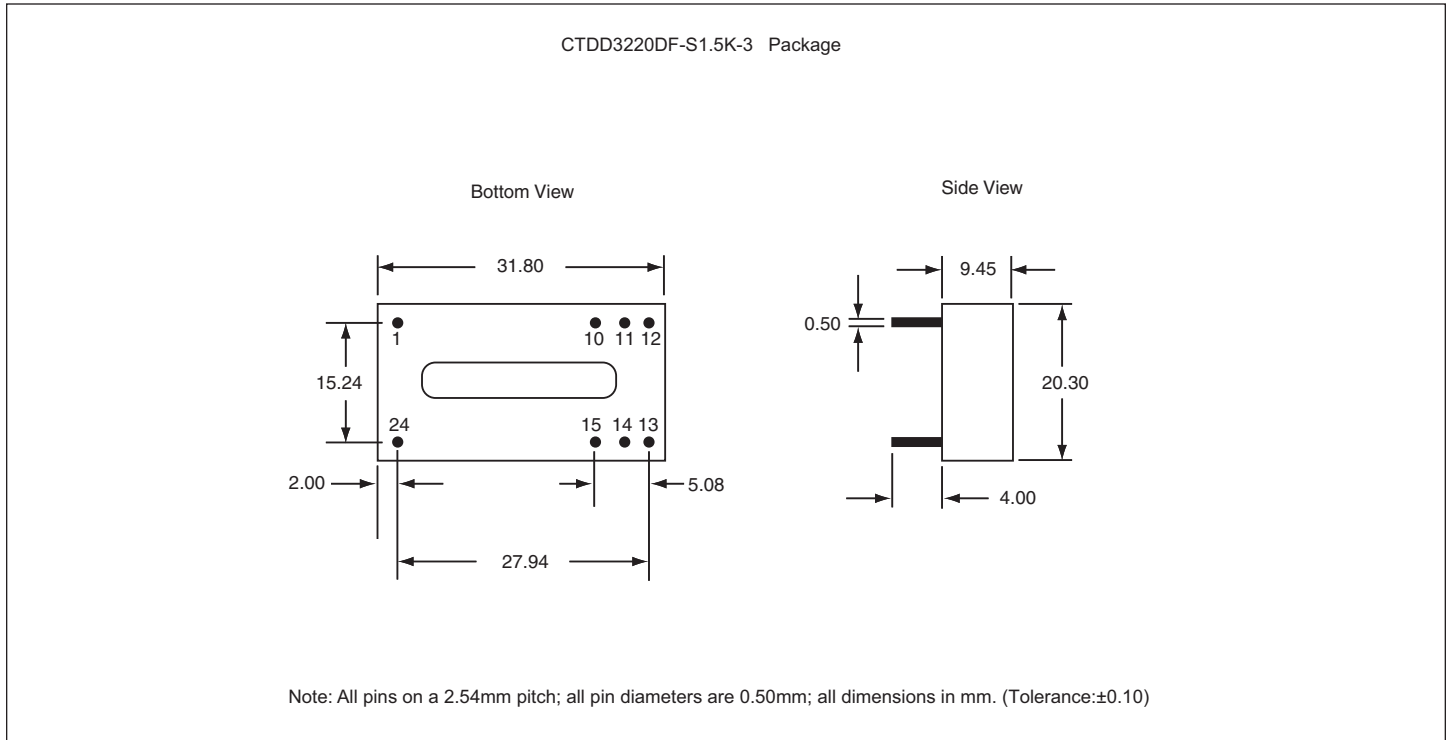


01.08.07

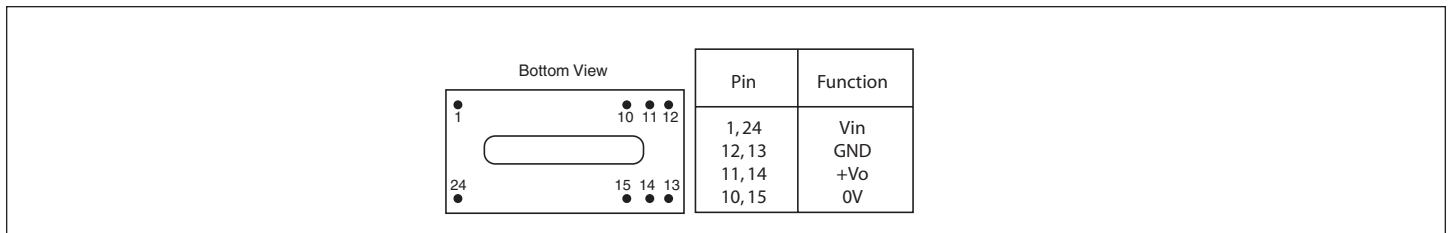
CTDD3220DF-S1.5K-3 Series

Wide Input Isolated & Regulated
3W Output, Single Output

OUTLINE DIMENSIONS & RECOMMENDED FOOTPRINT DETAILS



PIN CONNECTIONS

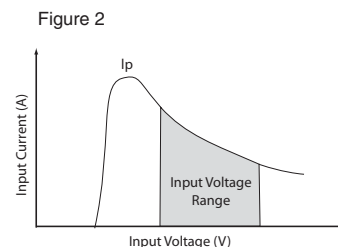
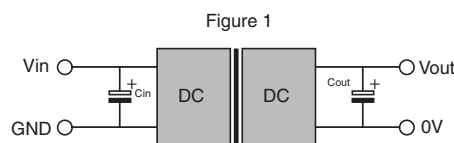


RECOMMENDED CIRCUIT

All the CTDD3220DF-S1.5K-3 Series have been tested according to the following recommended testing circuit before leaving factory. This series should be tested under load. Never be tested under no load (See figure 1 & 2). If you want to further decrease the input/output ripple, you can increase capacitance properly or choose capacitors with low ESR. However, the capacitance should not be too high. (See table 1). If you want to use the products in high EMI, please choose our metal package products.

External Capacitor Table (table 1)

V _{in}	C _{in}	C _{out} (0+70°C)	C _{out} (-40+85°C)
5V & 12V	100μF	100μF (electrolytic capacitor)	47μF (tantalum capacitor)
24V & 48V	10μF		



01.08.07